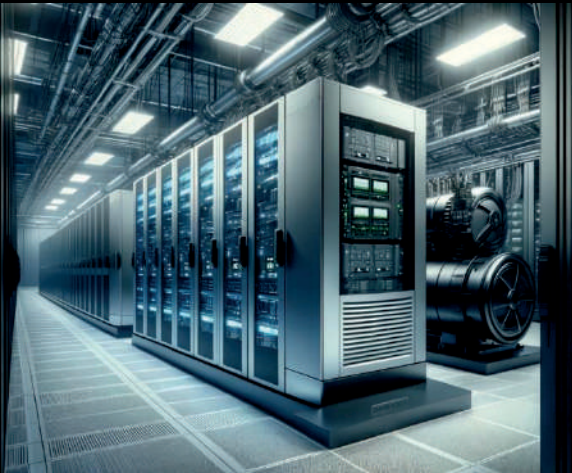


# Pulse Tech

## Engineering

WELCOME TO OUR GATEWAY FOR ENGINEERED EXCELLENCE



### DATA CENTRE SERVICES

- Civil & Construction
- Renewable Energy Solutions
- Building Management Systems
- Access Control & CCTV
- Steel Structures
- Generator Power Solutions
- Fire Detection & Suppression
- Security Solutions
- HVAC System Solutions
- UPS Solutions
- Maintenance
- Structured Cabling

### HIGH SITE CONSTRUCTION & MAINTENANCE

- Tower and Mast Manufacturing, Construction & Maintenance
- Steel Structures Manufacturing, Construction & Maintenance
- Full Field Maintenance - Generator, UPS & Electrical
- Tower and Mast Audits
- Emergency maintenance
- Minor Field Maintenance
- RF & Microwave
- Antenna Mounting structure maintenance



### PROFESSIONAL SERVICES

- Engineering
- Project Management
- Technical Installations
- CAD Design
- Rendering
- Conceptualization
- Consultancy
- IT & Infrastructure Services
- Subject Specialist

**Data Centre Services:**

Pulse Tech Engineering excels in the design, build and maintenance of data center facilities, offering an array of services designed to ensure operational excellence and efficiency.

**Civil and Construction Services:**

Tailored specifically for data centers, including site preparation, construction, and integration of essential infrastructures.

**Steel Structures:**

Custom design and installation of steel structures provide a durable and flexible framework for data centers, ensuring scalability and robust protection for critical IT infrastructure.

**HVAC System Solutions:**

Innovative heating, ventilation, and air conditioning systems designed to maintain optimal environmental conditions, crucial for the reliability and longevity of data center operations.

**Renewable Energy and Power Solutions:**

Implementation of sustainable energy solutions, alongside reliable generator, and UPS systems, to guarantee uninterrupted power supply and operational resilience.

**Advanced Safety Systems:**

Deployment of sophisticated fire detection and suppression systems, complemented by access control and CCTV for comprehensive security and safety management.

**Tower and Mast Maintenance:**

Including detailed audits and maintenance plans for longevity and performance, covering everything from structural integrity checks to rust prevention.

**Comprehensive Field Maintenance:**

Full-spectrum maintenance services for generators, UPS systems, and electrical infrastructure, ensuring high site reliability.

**Antenna and Structure Maintenance:**

Expertise in the maintenance of antenna mounting structures and RF & microwave systems, ensuring optimal transmission and reception capabilities.

**Emergency Maintenance:**

Rapid response teams to address and rectify any unexpected issues, minimizing downtime and maintaining service continuity.

**Professional Services:**

Beyond physical infrastructure, Pulse Tech Engineering provides a suite of professional services that complement their technical and construction capabilities:

**Engineering and Project Management:**

Leveraging deep technical knowledge to oversee projects from concept through to completion, ensuring adherence to specifications, budgets, and timelines.

**Technical Installations and CAD Design:**

State-of-the-art technical installations, supported by detailed CAD designs, renderings, and conceptualizations, facilitate precision in planning and execution.

**Consultancy and IT Infrastructure Services:**

Offering expert advice and solutions in IT and infrastructure, guiding clients through complex technical landscapes with tailored consultancy services.

**CONTACT US**

**T: 021 905 1306**

**E: [info@pulse-tech.co.za](mailto:info@pulse-tech.co.za)**

**(Business Related Queries)**

**E: [support@pulse-tech.co.za](mailto:support@pulse-tech.co.za)**

**(Technical Support Queries)**

[www.pulsetechengineering.com](http://www.pulsetechengineering.com)

Malbec Road, Saxenburg Park 1, Blackheath, Cape Town, 7580